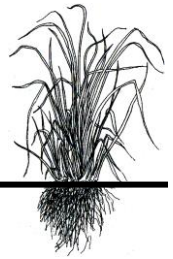




PENNSYLVANIA
FORAGE and GRASSLAND
COUNCIL
<http://www.afgc.org/pennsylvania.php>

American Forage and
Grassland Council
Affiliate
www.afgc.org



PENNSYLVANIA FORAGE and GRASSLAND NEWS

Volume 27, No. 3, Summer 2017

Supporting Members of PFGC

Many businesses support the PFGC through their membership and involvement in many of the PFGC sponsored activities. Our supporting members for 2017 are listed below.

AgChoice Farm Credit
Barenbrug, USA
Delmhorst Inst.Co.
Ernst Conservation Seeds
Fulton Bank-AG
Lancaster Farming
Northampton County Seeds
Seedway, Inc.
W-L Research

Ampac Seed Co.
Chemgo Seeds
Dow AgroSciences
Farmshine Publications
Kings Agriseeds
New Holland N.A. Inc.
Rohrer Seeds
Timac, USA. Inc.

2017 Ag Progress Days

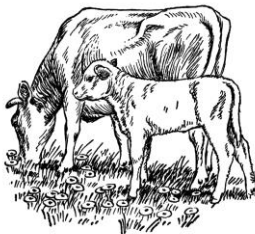
Dates and times for Penn State's Ag Progress Days:

August 15, 9 a.m. – 5 p.m.
August 16, 9 a.m. – 8 p.m.
August 17, 9 a.m. – 4 p.m.

Located at the Russell E. Larson Agricultural Research Center, 2710 W. Pine Grove Rd, Pennsylvania Furnace, PA. **Visit our Hay Show Display in the Harrington Building!**

2018 Forage Conference

Plans are currently underway for the 2018 Forage Conference. Keep an eye out for updates and information in the next edition of Pennsylvania Forage and Grassland News!



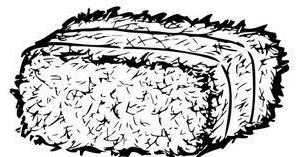
PFGC is now on Social Media!

Find us on Facebook by searching 'Pennsylvania Forage and Grassland Council' to keep up with updates and important links!



Rule and Class Change Notice - PFGC Hay Show at Ag Progress Days

This year, it will be required of all members wishing to exhibit hay at the APD Hay Show to be a member of the Pennsylvania Forage and Grassland Council. Membership brochures are currently available upon request by contacting Jessica Williamson at (814)865-9552 (leave a message with your full name, address, and phone number if Jessica is not available), or by contacting Terri Breon at (814)355-1912 or tgbreon@breonconsulting.net. Membership brochures will also be available at hay drop-off at the APD site. Classes and Sections will also be changed for the 2017 APD hay show. The Pennsylvania hay producers were kept in mind when PFGC implemented these changes – hoping that the changes in classes would allow more samples to be entered in more classes across the show. Also, unlike in years past when premiums were only awarded to class winners through 3rd place, a monetary premium award will be given to all class winners through 5th place. Overall, premium awards have increased in value.



PFGC Hay Show at Ag Progress Days

As you make hay this year, pull a couple of your best bales and store them in a dry spot so that when Ag Progress Days rolls around you will have easy access to them. The Hay Show is located inside the Harrington Building at the end of East 5th Street. Hay samples delivered to Ag Progress Days on Tuesday, August 16 should be dropped off at the special **Hay Sample Drop-off Point** located along the East entrance to Ag Progress Days. **Deadline for sample delivery is 10:00 a.m. on August 15.**

Please take note

that the hay classes have changed from years past. Section I will include only completely field-cured hay, and Section II will include heat or mechanical drying, as well as added hay preservatives.

Additional classes have been added to showcase the diversity of hay grown in Pennsylvania and expand the educational value of the show.

All members of the Pennsylvania Forage and Grassland Council can enter any number of samples without a charge. All other non-member exhibitors will be charged \$10/sample. Entry fees must accompany hay samples. CREDIT CARDS WILL NOT BE ACCEPTED. Must have check or cash.

If exhibitor is not a member of the PFGC and would like to join, membership brochure can be found at <http://www.afgc.org/pennsylvania.php> or contact Terri Breon at (814)355-2467 to be mailed to the exhibitor or membership can be paid with sample delivery.

The opportunity to become a member will be available at the drop off site at APD, but membership brochures are also available online at the PFGC website.

Rules

1. Entries officially close at 10:00 a.m., Tuesday, August 15, 2017. However, to facilitate handling of samples, exhibitors are urged to deliver their samples to the hay show building on Monday, August 15. Hay shipped or

delivered prior to August 1 should be clearly identified as Hay Show Sample and addressed as follows:

Dr. Jessica Williamson
Dept. Plant Science
116 Ag. Sci. and Ind. Building
Penn State University
University Park, PA 16802

2. *All members of the Pennsylvania Forage and Grassland Council can enter any number of samples without a charge. All other non-member exhibitors will be charged \$10/sample. Entry fees must accompany hay samples.*
3. The hay shown must have been grown by the Exhibitor in Pennsylvania in 2017.
4. Exhibitors may enter in as many classes as they wish, **but no exhibitor shall have more than one entry in a class**, either in his own name, the name of the farm, or the name of some other person.
5. Exhibitors must attach an entry blank, giving name, address, county and class in which the exhibit is to be entered. Exhibitors can secure additional entry blanks at their County Agricultural Extension Office.
6. LONG HAY FROM ANY BALES (small square, large round or large square) THAT HAVE BEEN CURED (adequately dry) can be entered. **An exhibit must consist of a bale section 4 to 6 inches thick, 12 inches high and 18 inches wide.** Thin or moist samples will be disqualified.
7. SAMPLES MUST BE TIED WITH TWINE.
8. Judging will be based on both visual characteristics and forage quality analysis.
9. Unless disapproved by the exhibitor, samples will be stored for exhibit in the Hay Show at the 2018 Pennsylvania Farm Show. To receive cash prizes from the Farm Show you must provide them with your Social Security Number. Mail the attached tear-off tab directly to the Farm Show.

For more information or a Hay Show brochure, please contact Jessica Williamson at jaw67@psu.edu or 814-865-9552. For membership inquiries, please contact Terri Breon at (814)355-1912 or tgbreon@breonconsulting.net.

It's Time to Stockpile Forages

For those who raise livestock, making hay is a way of life. However, after going through another frustrating hay season dealing with weather and equipment, there has to be a better way ... and there is.

Stockpiling forages, especially cool-season grasses for fall and winter grazing, is an excellent option – and now's the time to consider it. All you need to do is make a final grazing of the field or final mowing and let it grow until later in the fall or winter. Typically, adding nitrogen when stockpiling is initiated will increase yield and quality.

If you live in an area with fescue, this is the forage that usually works best. Other grasses like orchardgrass work, but the quality and yield diminishes faster as winter weather settles in. We have conducted research in eastern Ohio periodically over the past 25-plus years, and we have consistently had increased yield and quality when nitrogen fertilizer was added, although not always statistically significant.

For example, in replicated trials at three locations in eastern Ohio last fall, there was a significant difference between the control (no fertilizer) and treatments of 100 pounds of urea, 100 pounds urea plus Agrotain and 219 pounds of ammonium sulfate (the three treatments were 46 actual pounds of nitrogen per acre) for yield and crude protein – but not among the treatments. The forages were predominantly fescue and orchardgrass pastures. The study was initiated on Aug. 2, 2016, and harvested on Nov. 4, 2016. There was no more than 0.1 inch of rainfall in the first 12 days of the trial and 3.2 to 5.85 inches of rain within 30 days. The control plots averaged 2,627 pounds dry matter per acre, and plots with nitrogen added averaged 3,144 to 3,694 pounds dry matter per acre. Crude protein averaged 13.19 percent for the control plots and 13.35 to 13.65 percent for the treatments. So we had improved yield and quality adding nitrogen.

What are some considerations for stockpiling? Do you have extra pasture or hayfields you can stockpile? Are you going to be short on stored feed this winter? Can you sell extra stored feed and stockpile? Will the cost of the fertilizer be more or less than purchased hay? Depending on weather conditions when stockpiling, and the availability and cost of purchased hay, sometimes buying hay could cost less.

How about other factors, such as the time needed to feed the hay compared to grazing the stockpiled forages? I know I save up to an hour each day when my cattle are

on stockpiled forages compared to feeding hay every day. In many situations, the quality of the stockpiled forages may be better than hay. I know many producers who feed hay in the late summer while stockpiling because they will use less hay in a given year overall.

Another reason I like to stockpile is for calving season in March. I save a “high and dry” field stockpiled since last August, and not only am I done feeding hay three weeks early, but the cows have a thick sod to calve on – eliminating mud issues. The cows even seem to improve body condition once on the stockpiled fescue. However, I do feed a couple of pounds of shelled corn to each cow every day to provide a little extra energy. I also recommend a forage test prior to feeding that late in the season, as quality of the stockpiled fescue will decrease.

When considering stockpiling, think about time, costs and weather. I have already mentioned time saved not having to feed hay, but how about the time and cost of making hay? Generally speaking, it is three times more expensive to feed an animal than to make them graze it.

If you have the opportunity, I would stockpile, especially cool-season grasses like fescue. Depending on what part of the country you're in, you can initiate stockpiling now through October. The earlier you begin, the higher the yield will be – but lower-quality when you begin grazing. The later you begin stockpiling, the quality will tend to be higher and the yield lower. If a soaking rain is forecasted within a couple of days, applying approximately 50 pounds of nitrogen in the form of urea will provide additional yield and quality. If no rain is forecasted in the near term, applying Agrotain will reduce chances of volatilization with urea. Ammonium sulfate worked well in the trials, even without rain, but the costs were approximately twice as much compared to urea.

Each year, I try to reduce the amount of hay I make and increase the amount of acreage I stockpile. My goal is to get down to only 60 days of feeding hay this year. A few farmers in southeast Ohio have gotten down to 30 days or less. I hope to eventually get there as well – and maybe get less frustrated putting up hay.

Source: Chris Penrose, Ohio State, for Progressive Forage

**Don't forget to visit us at the Pennsylvania
Hay Show at Ag Progress Days!
August 15-17, 2017
and plan to attend the Annual PFGC
picnic, Wed. evening after visiting APD!**



**Pennsylvania
Forage &
Grassland
Council**

Terri Breon, PFGC Exec. Secretary
174 Crestview Dr
Bellefonte, PA 16823
(814) 355-1912
tgbreon@breonconsulting.net

Upcoming Events in your Area!

- **Penn State Diagnostic Clinic**
Rock Springs, PA
July 19 & 20, 2017

- **Penn State Ag Progress Days**
Rock Springs, PA
August 15-17, 2017

- **PFGC Picnic**
Rock Springs, PA
August 16, 2017
 - Appetizers: 5:00 p.m.
 - Forage Research Tour: 5:30 p.m.
 - Dinner: 6:30 p.m. (\$15/person)

Check out our new website!

Visit <http://www.afgc.org/pennsylvania.php> to stay up-to-date with PFGC events and news!

PFGC Officers and Board

The following is a list of the current officers and Board of Directors of the PFGC. If you have questions, concerns or suggestions on how the PFGC could serve you better, please contact one of these people.

Officers

President	Lamar Bomberger	(570) 412-6867
Vice President	Andrew Frankenfield	(610) 489-4315
Exec. Vice-Pres.	Jessica Williamson	(814) 865-9552
Secretary/Treasurer	Terri Breon	(814) 355-1912

Board of Directors

Producer

Jeff Bloss	(570) 954-7327
Jesse Bitler	(610) 944-0541
Russ Wilson	(814) 771-1266

Public

Andrew Frankenfield	(619) 489-4315
Suzette Truax	(717) 987-4272
Donna Foulk	(570) 992-2238

Industry

Lamar Bomberger	(570) 412-6867
Dave Hunsberger	(717) 436-9798
David Fink	(610) 767-2409

Pennsylvania Forage and Grassland News is published quarterly by the Pennsylvania Forage and Grassland Council. Edited by Dr. Jessica Williamson.