

Sponsored by

**Illinois Forage and Grassland Council  
And  
John Wood Community College**

Supported by:



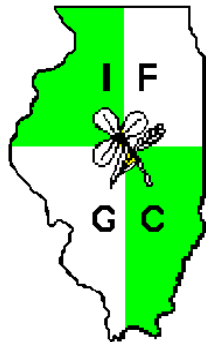
College of Agricultural, Consumer and Environmental Sciences

**Two Rivers RC & D**

**Illinois Grazing Lands Conservation Initiative**

**Pike County Soil and Water**

**Conservation District**



### IFGC Mission Statement

The mission of the Illinois Forage and Grassland Council is to provide the framework that unites industry, producers, and educational/governmental institutions for the production, marketing, and wise use of forages and grasslands.

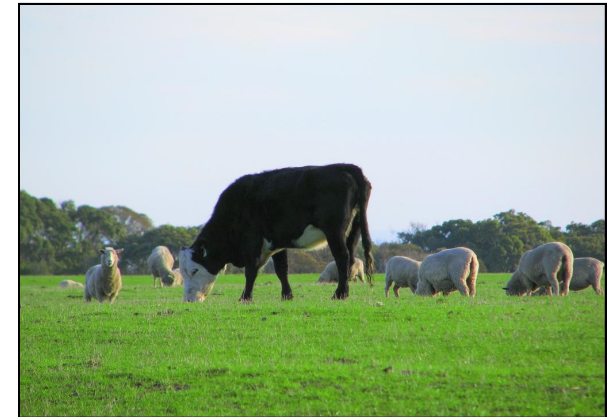
### Become A Member of IFGC

IFGC offers members a network of professionals and peers that understand and promote grazing and the use of forages in Illinois agriculture.

Membership includes:

- IFGC quarterly newsletter, "Forage Feed" which includes announcements of upcoming forage and grazing events.
- Discounted admission to IFGC events.
- Receive a free PEAQ or Grazing Stick
- Membership in the American Forage and Grassland Council, the leading forage organization in the US.
- Publications, e-newsletters and access to additional information sponsored by the AFGC and IFGC.

Individual memberships are \$25 per year. Corporate memberships are \$200 per year. Membership applications and more information on membership is available in our newsletter or on line at [www.illinoisforage.org](http://www.illinoisforage.org).



**Thursday, March 8, 2012**

John Wood Community College  
Orr Research and  
Demonstration Center,  
37803 St. Hwy 104  
Perry, IL

**9:00 AM – 4:00 PM**

Sponsored by:  
Illinois Forage & Grassland Council &  
John Wood Community College



*New IFGC members are eligible to receive 1 complimentary PEAQ stick or Grazing Stick.*

# Illinois Forage Institute

Thursday, March 8, 2012

John Wood Community College  
Orr Research and Demonstration Center  
37803 State Highway 104  
Perry, IL

## Agenda:

8:30 a.m.	Registration & Refreshments	1:00	<b>Pasture Management Seminar</b>
9:00 am	Baleage: A feed production alternative Kendall Guither, producer		Pasture evaluation Roger Staff, USDA-NRCS
	Forage species selection Richard Hungerford		Grazing Experiences David Otte, Producer
	Break		Grazing Experiences Ken Sutter, Producer
	Annual forages Doug Hanson		Orr Research Center Update Travis Mateer, U of I Extension
	Fertility for Pastures Robert Bellm, U of I Extension		
	USDA Program opportunities for forage production and livestock manage- ment Johanna Stevenson	4:00 p.m.	Adjourn

12:15 Lunch- Catered by the  
John Wood CC Ag Club

12:50 IFGC Forage Awards

Program Sponsors: IFGC and John Wood Community College

Program Supporters are: UI Extension, USDA-NRCS, Two Rivers RC & D, Illinois Grazing Lands Conservation Initiative and Pike County Soil and Water Conservation District



For additional information contact  
Dave Gentry at 309/557-6397

## Registration Form:

### Early Registration Fee – Due Feb. 24

- Registration includes lunch
- IFGC Member \$15.00
  - Non-IFGC Member \$ 20.00
  - IFGC Membership & Institute Registration \$40.00
  - Student w/ID \$10.

### Registrations Received After Feb. 24 or At the Door

- IFGC Member \$ 20.00
- Non-IFGC Member \$ 25.00
- IFGC Membership & Institute Registration \$45.00
- Student w/ID \$10.00

Name(s) \_\_\_\_\_

Address \_\_\_\_\_

City \_\_\_\_\_ ST \_\_\_ Zip \_\_\_\_\_

Phone ( ) \_\_\_\_\_ E-mail \_\_\_\_\_

Register online or by mail.

Mail Registration to: U of I  
Extension, Hancock County,  
550 N Madison, Carthage, IL 62321

On line Registration : [http://  
web.extension.illinois.edu/abhps/](http://web.extension.illinois.edu/abhps/)

Make Check payable to:  
University of Illinois Extension